



Ship Agency | Chartering | Ship Management  
Approved by DG Shipping, Govt. of India  
RPSL MUM - 424



[www.online.in](http://www.online.in)



## ANLINE SHIPPING PVT. LTD

Anline shipping pvt. ltd is a leading global services provider of ship agency services. We have been working with world class ship Owners and charters for over 8 years, We are committed and engage in all areas of ship agency , chartering and ship broking services for all types and sizes of ships. We do not compromise on quality services. we work with our clients through open and honest discussion, as the transparency is the key of trust.

### "Dedicated in serving the shipping industry around the clock 24x7."

Based in one of the world's major shipping centers, Anline steadily became one of the most successful ship agency house worldwide, serving clients locally as well as globally. Each year, Anline successfully participates in a significant number of sale and purchase transactions of ocean-going vessels, of every type, from new building to second-hand and demolition deals. With over eight years of experience in wealth creation in the shipping industry and a vast network of clients ranging from large listed owners down to small private ownerships across the globe, ANLINE SHIPPING broking is a true market leader in providing unparalleled investment intelligence and consultancy in a market strike with high risk and volatility. Furthering the success in the Sale and Purchase market and at the request of our clientele, in 2012 ANLINE Chartering. was established for the purpose of providing chartering services for both dry cargo and tanker vessels. Infused by the energy and achievements of our S&S department, ANLINE Chartering evolved dynamically beyond all expectations. Currently, the department, along with the administrative staff, consists of well- trained, experienced and highly educated chartering brokers.

We brought to the company an accumulated experience and knowledge of more than 8 years in ship agencies and ship services.

Our dedicated operations staff offer round-the-clock attendance to coordinate and ensure vessels smooth turnarround, providing prompt dispatch from port pre-arrival to post-departure attendance

#### **Our port services include:**

- ⚓ Handling owners' husbandry matters
- ⚓ Crew change and handling crew matters
- ⚓ Vessel loading and dis charging operations
- ⚓ Bunkering services
- ⚓ In/out- port freshwater supply, pilotage, towage
- ⚓ Ship's spares handling, collection, storage, warehousing and forwarding
- ⚓ Provision and general ship stores supply
- ⚓ All Port-related matters and services
- ⚓ Drydocking operations
- ⚓ Off-port limit (OPL) calls
- ⚓ CTM Delivery
- ⚓ Coordinating all owner's matters  
(Annual class surveys, LSA/FFE, Radio, VDR etc.)



## AGENCY / CHARTERING

### Ship Agency

Anline provides services as Owners agents, Charterers Nominated Agents or as Charterers/ Owners/ Shipper/Receivers protective Agents. Handling al ports of India, Covering major and minor both, via our extensive network of own officers our Agency Divisioan has been growing in every month based on our uncompromissing quality of services and unbiased reporting. With real time updates and close liaison with all concerned, we provide a smooth turnaround for all vessels, keeping our principals always in control of the port operations. Our offices are manned by senior marine personnel and highly experienced staff who are equipped to handle all kinds of issues pertaining to a vessels port call. A centralized control from the head office in New Delhi ensures that our principals receive the advantages of fluents communications and a single point of contact for all matters including operations, finance and any other vessel requirements. Close liaison with the port office concerned.

### Chartering

ANLINE Shipping is actively involved in the spot, Time Charter and COA bussinesses for tankers ranging from MR to VLCC on all principal routes. It is one of the most active Indian Ship broking teams representing both State Owned and Private Oil Majors and Charterers as well as leading tanker Owners and Operators. The Product Desk is involved in clean petroleum products ranging from representing Indian and international

- ⚓ Chemicals & Specialised Tankers
- ⚓ Containers/ Liners/ Heavy Lift
- ⚓ Dry Cargo
- ⚓ Projects
- ⚓ Offshore

With ANLINE SHIPPING Private Limited Expert Services we offer a range of knowledge- based services to help customers in a wide variety of industries grow with improved quality services, minimize investments and achieve sustainable success. Our services include:





## MANAGEMENT TEAM

Capt. Amardeep Managing Director	Nidhi Tomar Director	Aditya Rajput Director	Arsalan Khan Vice President
Capt. N. Kumar Business Advisor	Sandeep Kumar Fleet Personnel Manager	Sam George Chartering Manager	Raghavendra Chartering Manager
Jagdish Pandya Port Manager/Gujrat	Jonnadula Rama Dasu Port Manager/Andhra Pradesh	Asharful Islam Port Manager/West Bengal	Karthikeyan Port Manager/Tamilnadu
Ramesan T. R. Port Manager/Kerala	Abhishek Chakardhar Port Manager/Maharashtra	Malek Mohommed Ashfaq Port Manager/Surat	Sumanta Banerjee Port Manager/Odisha
Satish Reddy Accounts Manager	Injila Khan Operations Executive	Ahiba Khan Operations Executive	Preeti Kaur Administration Executive

## OUR SERVICES





## CHARTERING

ANLINE Shipping is actively involved in the spot, Time Charter and COA businesses for tankers ranging from MR to VLCC on all principal routes. It is one of the most active Indian ship broking teams representing both State Owned and Private Oil Majors and charterers as well as leading tankers Owners and operators. The Product Desk is involved in clean petroleum Products ranging from representing Indian and International Charterers and Owners.

### CHEMICALS & SPECIALISED TANKERS

ANLINE Shipping Chemical desk handles cargoes such as easy chemicals, acids, vegoils, palm Oils, Molasses, lubricating oils and bitumen for various international and coastal routes.

### DRY CARGO

Marine Specialists on ANLINE Shipping Dry desk focus on the iron-ore, coal, fertiliser, agro-product, aggregate trades, regularly fixing business for both states run and privately held companies in India and globally.

### CONTAINERS/ LINERS/ HEAVY LIFT

ANLINE Shipping has participated in various container, liners and heavy lift traders, and continues to pursue these growing markets.

### PROJECTS

Anline Shipping seek out long- and short-term Time charter and contract of Affreightment (COA) projects, based on market opportunities

### OFFSHORE

Anline Shipping Offshore desk provides principals with broking and chartering services for all kinds of offshore vessels including anchor handlers, platform supply vessels, FPSOs, drill ships and other support vessels. Concluding business and avoiding wastage of time and resources.



## HUSBANDRY SERVICE

ANLINE Shipping has the experience, skills, assets and tools to meet all your needs at sea, and in port, nationwide.

A vessel may need much more than simple ship agency services, hence ANLINE is your partner in port, Providing you tailor-made solutions for your husbandry needs

By providing vessels Agency services, at all the ports of India through our own office and as well as our strong associates for various Bulk, Break Bulk and Project cargoes. Our team is manned by senior experienced personnel who are equipped to handle all kinds of issues pertaining to a vessels port call. Continuous in-house training with-in the organization our operations executive's useful knowledge.

Excellent Job Execution, Understanding of the principal's requirements and prompt response are hall marks of our services. We hold our strength in good communications, clear documentation and knowledge of various port infrastructures, facilities, restrictions and procedures.





## OIL GAS EXPLORATION & DRILLING SUPPORT

ANLINE Shipping has the experience, skills, assets and tools to meet all your needs at sea, and in port, nationwide.

We are the preferred port agent of many owners managers and charterers.

We services the requirements of Owners of drilling Platforms, manufactures of oil field equipment and simulation software as well as suppliers of other related equipment and services. We also provide shore and on-brand support to various semi-submersible and jack up drilling rigs and conclude charters of anchor handling supply vessels. Additionally, we have been involved on behalf of our principals in supervision and survey of the construction of new building multi-purpose supply vessels in India and Overseas. This division also represents global manufacturers of oil field equipment and specialized consultancy services in providing laboratory equipment, Computer software and arranging training for oil & gas industry technicians.

## ANLINE MARINE TRADING

Our Trading Division is equipped to develop all proposals with no limitation of product or value. A team of dynamic Trade Executives is available to successfully develop and execute proposals received by them .

Our long-term association with most reputed and reliable suppliers, manufactures and buyers both in India and across the globe helps us in sourcing the best quality goods at the most economics prices.

With the knowledge, experience and confidence gained over the years, we are capable of conceptualizing the requirements of our clients and arrange sourcing exactly as per their specifications and budgets. Connitted to achieve the highest level of customer satisfaction, our team is capable of providing innovative solution to all your needs any where in the world.

The Port officers across the country assists in sourcing suitable and competitive products as well as to earmark manufactures or consumers of products to be traded. With inputs from the in-house Ship Broking and Port Agency divisions, we are able to identify the trade patterns into and out of India as well as to establish the reliability, financial stability and available infrastructure of the Indian 'buyer' or 'seller'. This proves to be a significant guiding factor for concluding business and avoiding wastage of time and resources.

## ANLINE MARINE SURVEY

This division Conducts survey on behalf of various principals including Manufacturing Industries and Underwriters located in India and Overseas. Our experienced team comprising of Master Mariners and engineers are fully equipped to conduct all types of surveys.

We conduct hull & machinery surveys and cargo inspections on behalf of Ship Owners, Charterers, Shippers, Receivers and Average Adjusters. Where required, we can make available Port Captains and Superintendents to attend to vessels at most ports east of Suez.

Empanelled with the four subsidiaries of General Insurance Corporation, we also perform technical surveys for local insurance companies as well as correspondent of foreign underwriters. These include loss assessment, risk inspection and surveys for insurance claims field under marine, engineering, fire and other insurance policies.



**ANLINE Shipping**  
have the relevant  
resources, system &  
experience to  
provide Solution to  
the highest Standard

ANLINE Shipping Pvt. Ltd. Provides crew management services to help our clients be more efficient and effective in their operations. We have the relevant resources, systems and experience to provide solutions to the highest standards. We believe that seafarers are the back bone of the shipping industry. All seafarers are assessed for their proficiency and certifications before deploying them on board any owners or operator's vessel

### **Services offered:**

Complete or partial manning for all category vessels. Dedicated pool of sea staff for respective owners. We have technically qualified and certified riding crew team for repairs and maintenance led by an experienced Bosun and or Fitters. Catering to crewing requirement for any owner and operator under any flag with the help of our channel partners.

Our team is fully capable of handling all documents required by the flag states including seafarer and customer asset base.





## TECHNICAL MANAGEMENT

We offer a wide range of technical services to shipowners from conceptual designs, project planning, new building supervision, dry-docking support and other services. Our technical management services are led by the highly experienced and dedicated marine professionals. The technical team consist of master mariners , chief engineers, electrical engineers. Our team is geared to take on every challenge with ready to mobilize high quality repair and maintenance equipment.

### Services offered:

Technical management of vessels in an effective and efficient manner Inventory management and supply of stores and spares. Dry dock planning. budgeting, execution and monitoring. New ship building supervision for owners, operators and banks. Pre- purchase inspection and performance evaluation for owners, operators and banks. Unscheduled ADHOC repair and maintenance with the help of dedicated supervisor abd repair squad. Up-gradation of laid up vessels and condition assessment. 24x7 technical support through global channel partners.

**ANLINE SHIPPING** Private Limited is well equipped with professional and well qualified managers, diversified vision, no limit contacts and huge public relations throughout the world to attend vessel at any stage anywhere. Our managers have proven efficiency throughout, independently, supporting ship owners, managers and even few well-established technical managers. We keep our pride in staying always ahead and moving to heights by every passing day. Below are our few of Technical supports from the vast ocean in Shipping organization:

- ⚓ Budgeting & Planning including, estimated operating cost for given vessels.
- ⚓ Trade estimates
- ⚓ Repair estimates
- ⚓ Maintenance or upgrading of vessel whilst trading. A cost-effective alternative to costly dry-dock repairs whilst vessel is trading with little or no downtime.
- ⚓ Professional / workshop / Crew attendance whilst vessel at the shipyards during docking and afloat repairs or surveys.
- ⚓ Quick response in Emergencies and expert's attendance as and when required. Continuous monitoring and suggestions to master to overcome the situation.
- ⚓ Cost effective and quality supplies of spares.



## POLICY AND QUALITY STATEMENT

"ANLINE SHIPPING", hereafter referred to as Company understands that safety, pollution prevention and efficiency are an integral part of good ship management, which can only be a result of a combination of right skills, knowledge and experience, The main objective is to ensure safety at Sea, prevention of human injury or loss of life, and avoidance of damage to the environment, in particular to the marine environment and to property.

The above conjugated with the commitment, competence motivation and attitudes of all individual at all levels are vital to the effort of quality services, which the Company aims to maintain at the highest level. Company understands that in order to aim for the same goal every individual in the Organization who partake as a team should have the benefit of knowing what they are working for as well as to know what are their objectives.

Company recognizes a fundamental duty to conduct its business in a socially, environmentally and economically responsible manner , which fosters safe and ethical behavior in the use of its assets. The Company is in business to provide high standards of comprehensive, commercial and technical management Services through the relentless pursuit of improvement in safety and quality, which are the integral parts of the company's policy and with the successful implementation of which the Company will ensure that life, property and environment are nurtured, and

The Company 's commitment to quality will be maintained by the management and senior executives who will ensure the company's policy is carried through to :

Promote each individual's personal involvement in maintaining high quality standards .

Ensure all necessary procedures and work instructions are available , operative and effective .

Identify , report and record any non conformity and take the necessary corrective action.

Continually review the quality management system to ensure that it reflects the company requirements.





## DRUG AND ALCOHOL POLICY

- 1) The misuse of prescribed drugs, or the use, possession, trafficking or sale of illicit or unprescribed controlled drugs on board is prohibited.
- 2) Any breach of the company's policy on drugs will result in the instant dismissal of person(s) concerned. Similarly, any breach of the policy relating to alcohol abuse will result in disciplinary action. This may well extend to dismissal.
- 3) The company permits carriage and consumption of alcohol on board provided the following conditions are met:
  - (a) No seafarer shall navigate or operate any ship's equipment whilst his judgement is impaired by alcohol.
  - (b) All seafarers at all times whilst on board a ship must be able to respond at any time to an emergency.
  - (c) A seafarer shall not report for duty or work with a Blood Alcohol Content in excess of 0 mg/100 ml.
  - (d) A period of 4 hours of abstinence from alcohol shall be observed prior to scheduled watch keeping duty or work period.
  - (e) Whilst employed on board a ship, no seafarer shall consume more than 2 units of alcohol within a 24 hours period, either on board the vessel or ashore.
  - (f) At no time should seafarers, or any person connected with the ship business, be intoxicated or have BAC in excess of 40 MG/100 ML at any time whilst on board the ship.
  - (g) Although USCG accepts a mandatory 4 hours abstinence period prior to reporting for duty, all company vessels trading to USA shall adopt a "dry ship" policy whilst in US waters-(see note 2) To this end, all alcoholic beverages are to be placed under lock and key prior to entering U.S. waters and released only leaving U.S. waters from U.S. ports.
- 4) All seafarers will, in their pre-employment and routine medical checks, be screened for alcohol and drugs abuse.

Note 1: Blood alcohol concentration (BAC) is measured as the number of milligrams of Ethanol in every 100 milliliters of Blood.

Note 2: "U.S." WATERS ARE DEFINED AS 'THE United States Exclusive Economic Zone.



## SAFETY AND ENVIRONMENT POLICY

In implementing company's policy pertaining to safety and environment protection, the following constitutes an integral part:

To firmly support the International Convention for the Prevention of Pollution from Ships (Marpol 73/78) and believes that the first line of defense against pollution must be to avoid accidents occurring.

To firmly support the safety of life at sea (SOLAS) and implement applicable legislation.

To ensure all shore and shipboard personnel are fully aware of the impact of their activities on the environment.

To fully recognize all implications in the term of safe ship operations and pollution prevention.

To ensure ship personnel are assessing the risk and mitigating it before carrying out any job.

To provide a safe, healthy workplace and environment for the employees ashore and afloat with an objective to eliminate work-related injury and illness by promoting safe practices, proper planning and execution of operations.

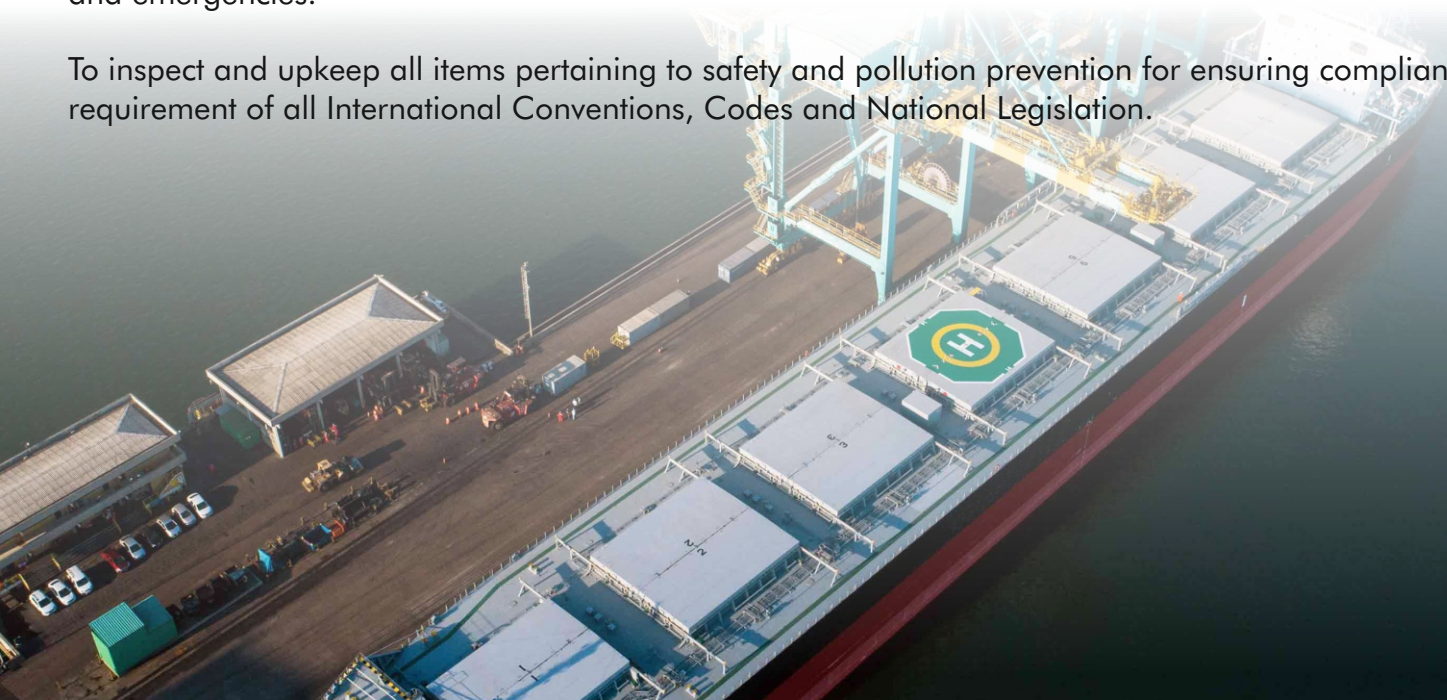
To encourage all individuals to identify potentially unsafe conditions or unlawful practices and to undertake corrective measures.

To ensure that each vessel is adequately manned as per the type and trading pattern and as far as possible all personnel engaged on the vessels have suitable experience commensurate with the trade.

To provide all its employees with information, equipment and training necessary for them to carry out their work safely.

That regular safety and contingency drills are conducted by the master and at times supervised by the shore personnel for ensuring that all personnel are fully conversant with their duties in times of eventuality and also with an idea to maintain a confident and proficient team on board to deal with all contingencies and emergencies.

To inspect and upkeep all items pertaining to safety and pollution prevention for ensuring compliance with requirement of all International Conventions, Codes and National Legislation.





## SECURITY POLICY

It is the policy of company to contribute towards a secure, terror and crime free world and to co-ordinate with the administration and global authorities by all available means to achieve secured ship, port facilities and by extension, the world.

This Manual describes the Company's Security system. Its contents have been reviewed and to comply with the requirements of SOLAS XI-2, ISPS Code Part A, ISPS Code Part B section 8.2-13.8, USCG regulation 33 CFR H Part 104, and relevant flag state notices and directives.

### ANLINE SHIPPING SECURITY OBJECTIVES ARE TO:

Provide for secured practices in ship operation and a secured ship.

Establish safeguards against all identified risks for the security of the ship and the port facility.

Continuously improve the security management skills of personnel ashore and aboard ship, including preparing for emergencies related to security caused by terrorist, piracy and pilferage attacks.

These security objectives will be achieved by:

Maintaining high standards of vigilance, alert, security consciousness, personal discipline and individual accountability by adherence to a comprehensive and documented system of training.

Actively promoting employee participation in measures aimed at improving security of ship and port facilities.

Keeping all personnel fully informed of any known or potential threat may affect themselves, their colleagues, the ship or the environment by transmittal of pertinent information.

Ensuring adherence at all times to the documented operating procedures by a system of internal verification of procedures and activities.

Continuously reviewing all mandatory National and International rules.

Regulations, industry codes and guidelines that are relevant to specific vessel types and trades.

Company shall provide all the necessary support to CSO and SSO so that they fulfill their duties in accordance with SOLAS XI-2 and the International code for the security of the Ships and Ports Facilities.



## CARRER AND JOB OPPORNUTIES



The AN Line Shipping, India office is an ISO 9001:2015 accredited company, and approved by DG Shipping, Govt. of India, RPS License MUM - 424. AN Line Shipping is one of the leading service provider of Maritime Services and recognized by the world globally. As an unique, diversified and globally recognized group, we are known to treat our colleagues as a key assets and enabling them to fulfil client satisfaction all the time. We ensure to attract, recruit, develop and retain the best people in the world on our manning vessels and guiding them to serve our clients with full dedication, handworks, honesty and integrity.

Since 2016, AN Line Shipping giving young aspirants a chance to serve the marine industry through sponsorship opportunities. We are hiring and recruiting hundreds of trainees to go on cadet ship (Deck Side/Engine Side) training without compromising their personal growth and interest under the DG Shipping recruitment and placement guidelines. Sponsorships are available twice a year i.e. January and August month of the year for Deck Cadets, Engine Cadets and all ratings.

### Ship Job Opportunities:

- ⚓ Trainee OS/Wiper
- ⚓ AB/Oiler
- ⚓ Trainee Cadets
- ⚓ 3rd Officers
- ⚓ 2nd Officers
- ⚓ Cheif Officers
- ⚓ Captain/Master
- ⚓ TME
- ⚓ 4th Engineer
- ⚓ 3rd Engineer
- ⚓ 2nd Engineer
- ⚓ 1st Engineer
- ⚓ Chief Engineer
- ⚓ ETO

### Shore Job Opportunities:

- ⚓ Marine Superintendent
- ⚓ Recruitment Consultant
- ⚓ Personnel Coordinator
- ⚓ Port Manager
- ⚓ Port Head
- ⚓ Chartering Manager
- ⚓ Account Consultant
- ⚓ Business Advisor
- ⚓ Marine Instructor
- ⚓ Crew Manager
- ⚓ Senior Claim Executive (P & I)
- ⚓ Marine Surveyor
- ⚓ Vessel Manager
- ⚓ Commercial Manager



**Head office (New Delhi)**

#703, 7th Floor,  
Bhikaji Cama Bhawan,  
Bhikaji Cama Place,  
New Delhi- 110066,  
Delhi, India  
Tel: +91-11-40574337/38  
Mob.: +91-7303482220  
Web: [www.anline.in](http://www.anline.in)  
Web: [www.anlineshipping.com](http://www.anlineshipping.com)  
Email: [info@anline.in](mailto:info@anline.in)  
Email: [agency@anline.in](mailto:agency@anline.in)

**Branch Office (Kolkata)**

4th floor, Room 405,  
Nigam Centre  
155, Lenin Sarani,  
Kolkata, Pin: 700 013.  
West Bengal, India  
Tel: +91-33 -40082596  
Email: [kolkata@anline.in](mailto:kolkata@anline.in)

**Port Office (Haldia)**

1st Floor, Plot No.1979P  
& 1995P, Municipality Area,  
Opp of Hotel Golden Retreat,  
P.S. Bhabanipur, Debogh,  
Dist: Purba Midnapur,  
Pin: 721657,  
Haldia, West Bengal.  
Email: [haldia@anline.in](mailto:haldia@anline.in)

**Port Office (Paradip)**

Ground floor,  
Lenka Clinic building,  
Nuabazar, Paradip,  
Jagatsingpur,  
Pin- 754142,  
Odisha, India  
Email: [paradip@anline.in](mailto:paradip@anline.in)

**Port Office (Visakhapatnam)**

1st Floor #25-12-40,  
P.V.R. Chambers,  
Godeyvari Street,  
Near 1 Town Police Station,  
Visakhapatnam - 520 001.  
Andhra Pradesh, India  
Email: [vizag@anline.in](mailto:vizag@anline.in)

**Port Office (Kakinada)**

3-18B-11, Flat No. S-2,  
Krishna Vihar  
Road No. 4, Ayodhya Nagar  
Kakinada - 533 003,  
Andhra Pradesh, India  
Email: [kakinada@anline.in](mailto:kakinada@anline.in)

**Port Office (Chennai)**

2nd Floor, #3, HC Tower,  
Back Side Indian Bank, Mannadi,  
Chennai - 600001,  
Tamilnadu, India  
Email: [chennai@anline.in](mailto:chennai@anline.in)

**Port Office (Tuticorin)**

2nd Floor, #:107/4B  
SM Puram  
3rd st  
Tuticorin -628003  
Tamilnadu, India  
Email: [tuticorin@anline.in](mailto:tuticorin@anline.in)

**Trade Office (Mumbai)**

A Wing, A 405-406,  
Samarth Aishwariya  
off link Road, Lokhandwala  
Andheri (W), Mumbai - 400053,  
Maharashtra, India  
Tel: +91-22-26322192 / 26322153  
Mob.: +91-9967219510  
Web: [www.anlineshipping.com](http://www.anlineshipping.com)  
Web: [www.anline.in](http://www.anline.in)  
Email: [agency@anline.in](mailto:agency@anline.in)  
Email: [mumbai@anline.in](mailto:mumbai@anline.in)

**Port Office (Kandla/Mundra)**

OFFICE NO. 13, 2nd Floor,  
Ward No. 12/B,  
Plot No. 336-337-343,  
Aum Corner, Banking Circle,  
Gandhidham, Kutch - 370201  
Tel: 02836-238218  
Email: [kandla@anline.in](mailto:kandla@anline.in)

**Port Office (Jamnagar)**

Kuber Avenue, 4th Floor,  
Shop No. 408 & 409,  
Jamnagar Municipal Corporation,  
Gurudwara Chowkdi,  
Jamnagar - 361001,  
Gujarat, India  
Tel: +91-288-2555883  
Email: [jamnagar@anline.in](mailto:jamnagar@anline.in)

**Port Office (Surat)**

Third floor, 20 D,  
Krishna nagar CHS, Part 1,  
Opp choksi wadi,  
Near Adajan Patiya, Surat,  
Pin code:395009,  
Gujarat, India  
Email: [surat@anline.in](mailto:surat@anline.in)

**Port Office (Goa)**

204/A, 2nd Floor  
Anand Chambers Bldg,  
F.L. Gomes Road,  
Near State Bank of India(S.B.I)  
Vasco Da Gama, Goa- 403802  
Maharashtra, India  
Email: [goa@anline.in](mailto:goa@anline.in)

**Port Office (Krishnapatnam)**

Flat No. 404. Sagarika Residency,  
Block-B, Dhanalakshmiapuram  
Opp: KGK Kalyan Mandapam  
SPSR, Nellore - 521003  
Andhra Pradesh, India  
Email: [krishnapatnam@anline.in](mailto:krishnapatnam@anline.in)

**Port Office (New Mangalore)**

28, GF, ABCO Trade Centre,  
Kottara Chowki,  
Mangalore - 575006,  
Karnataka, India.  
Email: [mangalore@anline.in](mailto:mangalore@anline.in)

**Port Office (Cochin)**

2nd Floor, Kuppakattu house,  
Alpatt cross road,  
perumanoor  
P.O.- COCHIN 682015.  
Tamilnadu, India  
Email: [cochin@anline.in](mailto:cochin@anline.in)

**AGENCY DEPARTMENT**

[agency@anline.in](mailto:agency@anline.in)

**HR DEPARTMENT**

[hr@anline.in](mailto:hr@anline.in)

**CHARTERING DEPARTMENT**

[chartering@anline.in](mailto:chartering@anline.in)

**CREWING DEPARTMENT**

[crew@anline.in](mailto:crew@anline.in)

**TANKER DEPARTMENT**

[tanker@anline.in](mailto:tanker@anline.in)

**DRY DEPARTMENT**

[dry@anline.in](mailto:dry@anline.in)

**SPARE PARTS DEPARTMENT**

[spares@anline.in](mailto:spares@anline.in)

**LOCAL OFFICES / PORTS****MUMBAI PORT**

[mumbai@anline.in](mailto:mumbai@anline.in)

**JAMNAGAR PORT**

[jamnagar@anline.in](mailto:jamnagar@anline.in)

**KANDLA PORT**

[kandla@anline.in](mailto:kandla@anline.in)

**KAKINADA PORT**

[kakinada@anline.in](mailto:kakinada@anline.in)

**CHENNAI PORT**

[chennai@anline.in](mailto:chennai@anline.in)

**KOLKATA PORT**

[kolkata@anline.in](mailto:kolkata@anline.in)

**HALDIA PORT**

[haldia@anline.in](mailto:haldia@anline.in)

**PARADIP PORT**

[paradip@anline.in](mailto:paradip@anline.in)

**SURAT PORT**

[surat@anline.in](mailto:surat@anline.in)

**VISAKHAPATNAM PORT**

[vizag@anline.in](mailto:vizag@anline.in)

**GOA PORT**

[goa@anline.in](mailto:goa@anline.in)

**KAKINADA PORT**

[kakinada@anline.in](mailto:kakinada@anline.in)

**KRISHNAPATNAM PORT**

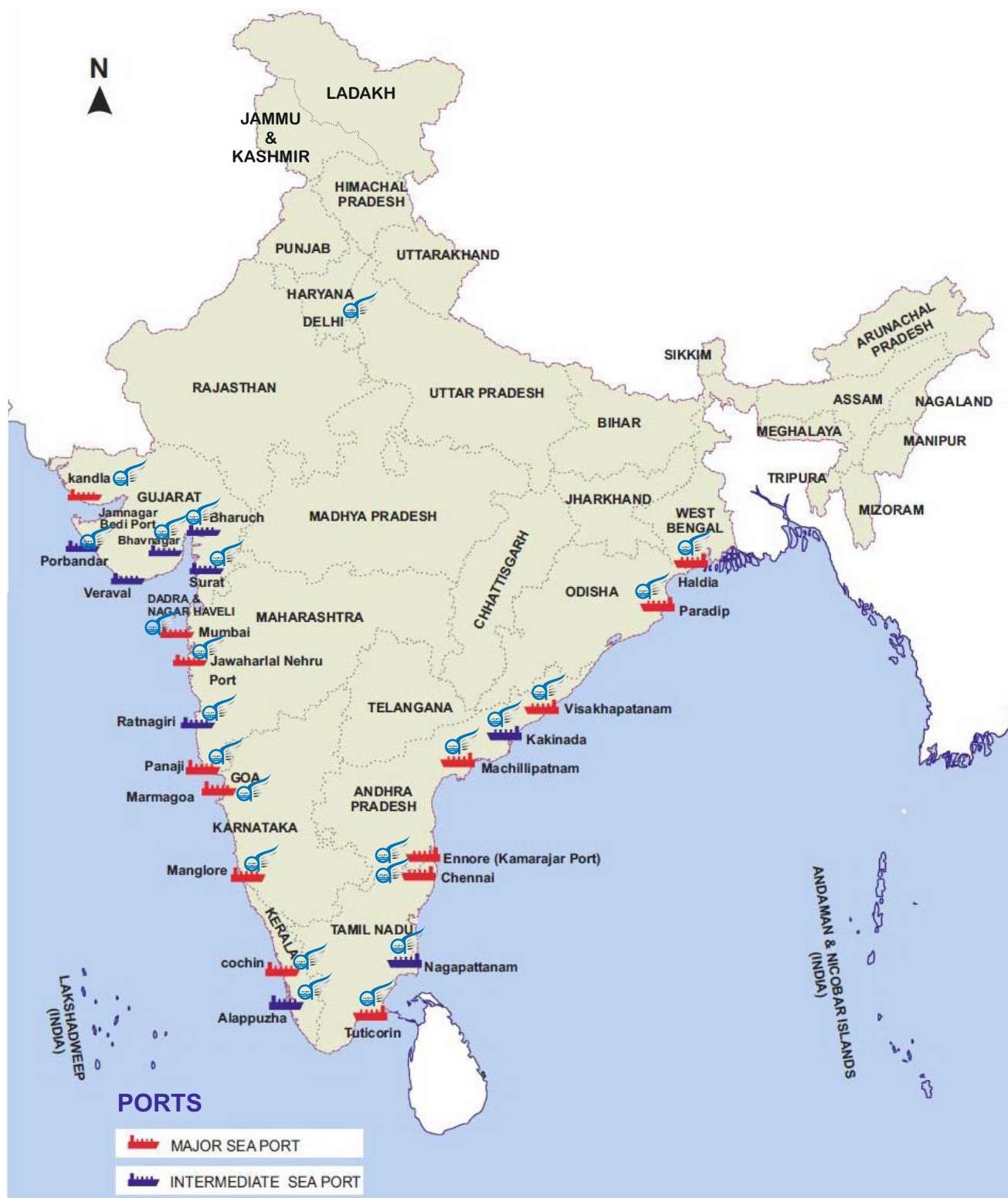
[krishnapatnam@anline.in](mailto:krishnapatnam@anline.in)

**TUTICORIN PORT**

[tuticorin@anline.in](mailto:tuticorin@anline.in)

**COCHIN PORT**

[cochin@anline.in](mailto:cochin@anline.in)



### HEAD OFFICE :

703, 7th Floor, Bhikaji Cama  
Bhawan, Bhikaji Cama Place,  
New Delhi - 110066  
Telephone : +91-11-40574337,38  
Fax : +91-11-40573776  
Email: info@anline.in, agency@anline.in

### TRADE OFFICE :

405-406, Samarth Aishwarya, Off Link  
Road, Opp Tarapour Tower, Lokhandwala,  
Andheri(w), Mumbai-400053.  
Telephone : +91-22-26322192  
Fax : +91-22-26322153  
Email.: mumbai@anline.in